

**Legend:**

- Drain Flow
- Study Corridor
- Oil Pipeline
- Natural Gas Pipeline

N

0    1,000    2,000

US Feet

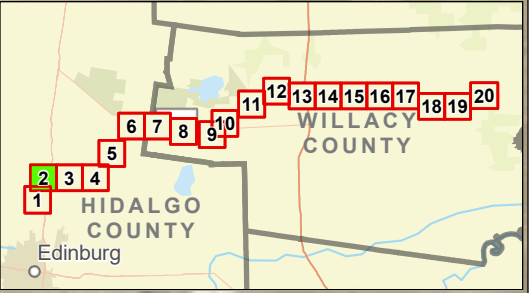
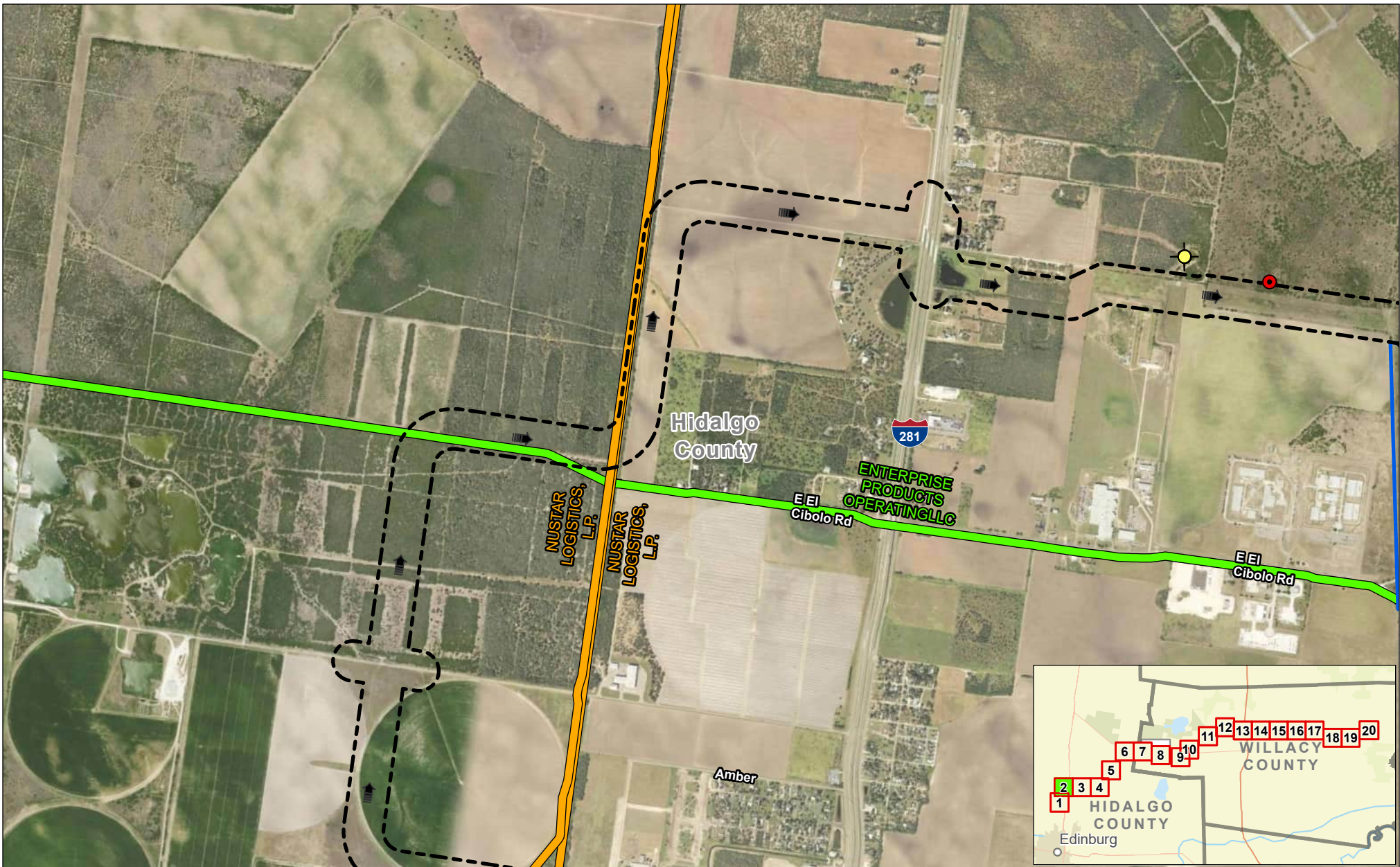


## Exhibit 16 Alternative 1 Oil & Gas Wells and Pipeline Map Sheet 1 of 20 Raymondville Drain Project

Author : Joel F. Aguirre    Updated : 10/13/2023

DISCLAIMER: RRP Consulting Engineers makes no guarantees as to the accuracy of data used in the construction of this map.

Path: S:\projects\4108000\_ProjectInventory\GIS\FOP\_Encls\Encl\_Series.aprx



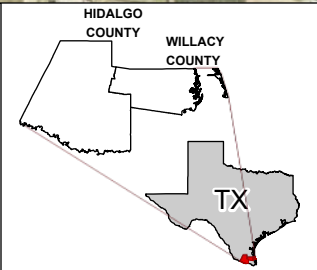
**Legend:**

- Drain Flow
- Study Corridor
- Proposed Detention Basin
- Oil Pipeline
- Natural Gas Pipeline
- Inactive Oil/Gas Well
- Dry Hole Well

N

0    1,000    2,000

US Feet



## Exhibit 16

# Alternative 1 Oil & Gas Wells and Pipeline Map

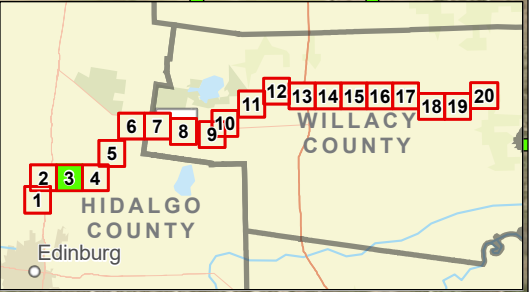
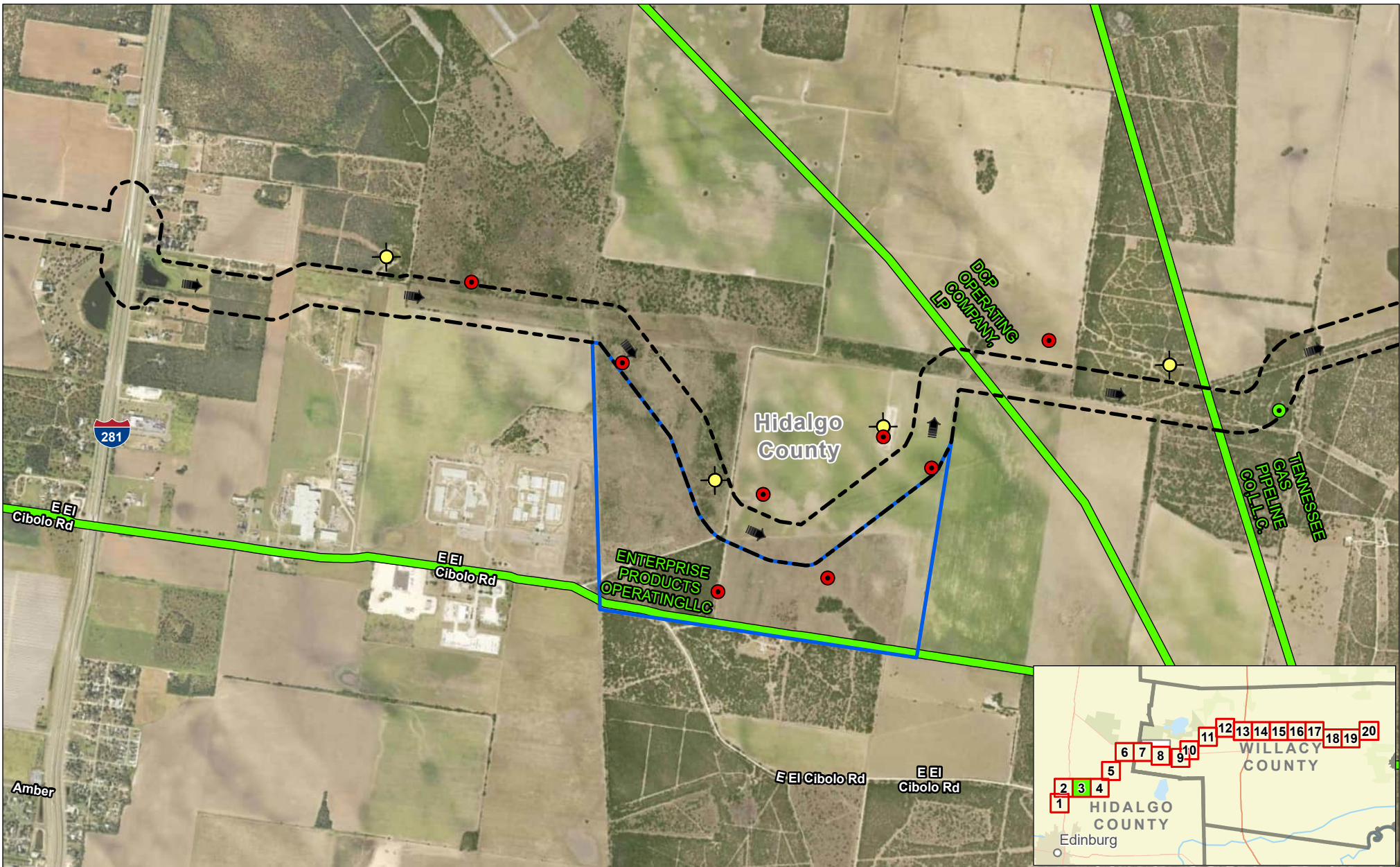
## Sheet 2 of 20

### Raymondville Drain Project

<b>Author :</b> Joel F. Aguirre	<b>Updated :</b> 10/13/2023
---------------------------------	-----------------------------

DISCLAIMER: RRP Consulting Engineers makes no guarantees as to the accuracy of data used in the construction of this map.

Path: S:\projects\4408000\_ProposedRaymondvilleDrain\Drawings\Drawings.dwg

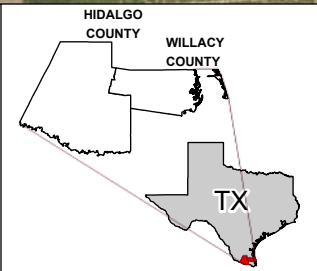


**Legend:**

- Drain Flow
- Study Corridor
- Proposed Detention Basin
- Natural Gas Pipeline
- Active Oil/Gas Well
- Inactive Oil/Gas Well
- Dry Hole Well

N

0      1,000      2,000  
US Feet

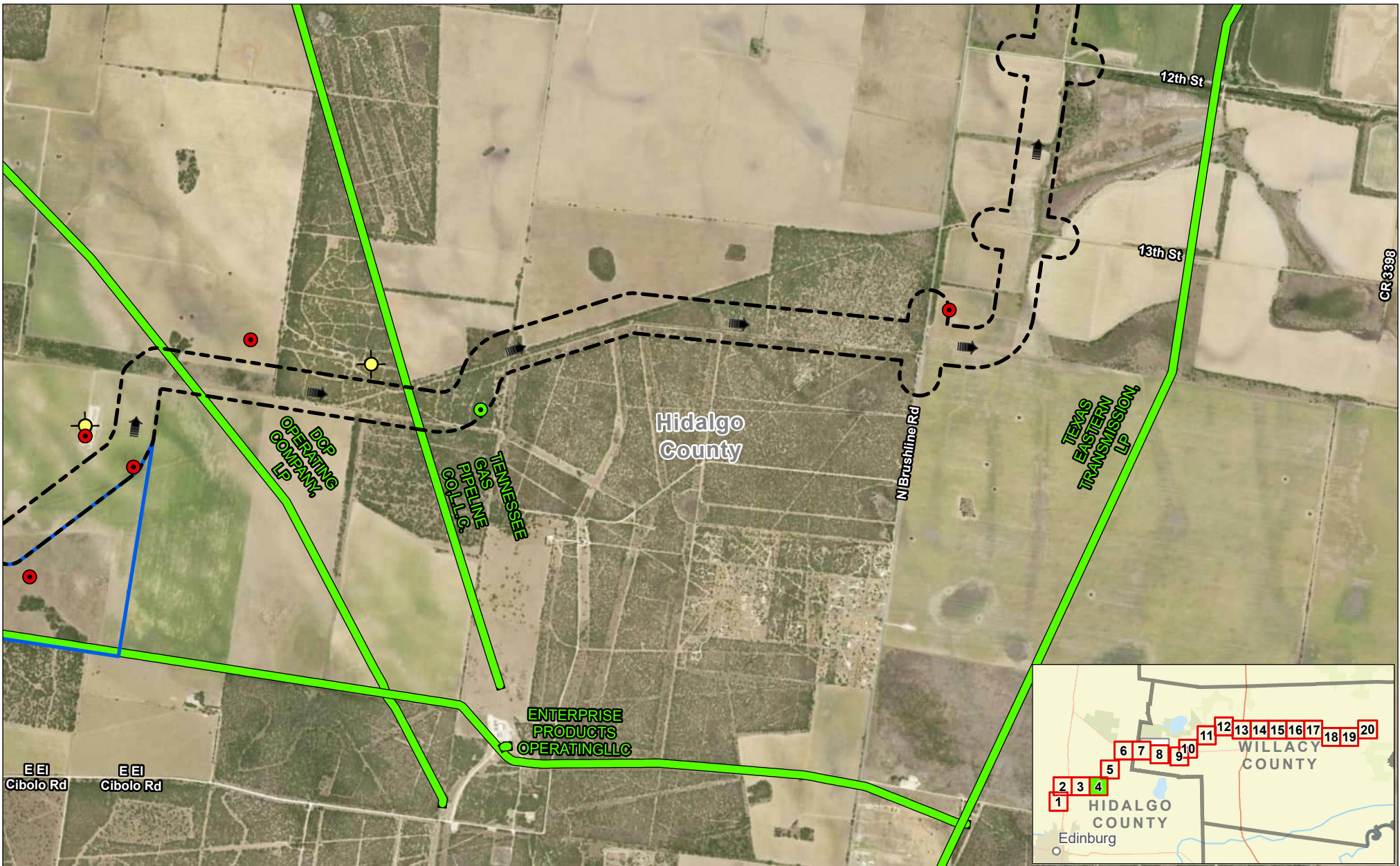


## Exhibit 16 Alternative 1 Oil & Gas Wells and Pipeline Map Sheet 3 of 20 Raymondville Drain Project

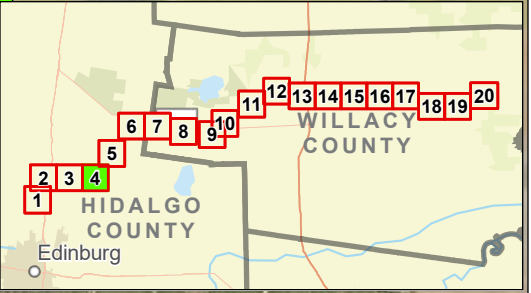
Author : Joel F. Aguirre      Updated : 10/13/2023

DISCLAIMER: RRP Consulting Engineers makes no guarantees as to the accuracy of data used in the construction of this map.

Path: S:\projects\4408000\_ProposedRaymondvilleDrain\Drawings\Drawings.dwg

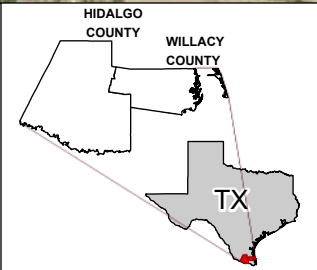
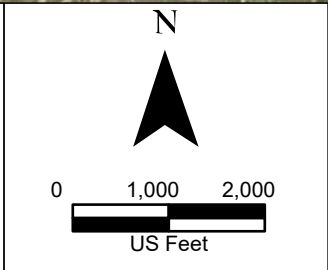


CR 3398



**Legend:**

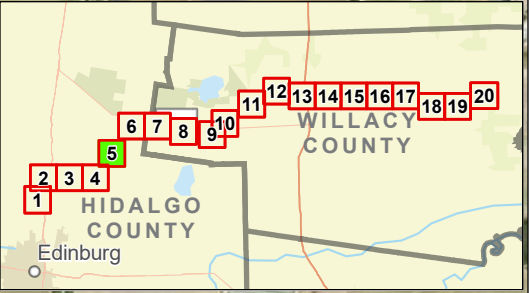
	Drain Flow		Active Oil/Gas Well
	Study Corridor		Inactive Oil/Gas Well
	Proposed Detention Basin		Dry Hole Well
	Natural Gas Pipeline		



**Exhibit 16**  
**Alternative 1 Oil & Gas Wells and Pipeline Map**  
**Sheet 4 of 20**  
**Raymondville Drain Project**

Author : Joel F. Aguirre      Updated : 10/13/2023

DISCLAIMER: RRP Consulting Engineers makes no guarantees as to the accuracy of data used in the construction of this map.



**Legend:**

- Drain Flow
- Study Corridor
- Natural Gas Pipeline
- Dry Hole Well

N

0      1,000      2,000

US Feet

HIDALGO COUNTY  
WILLACY COUNTY

TX

**Exhibit 16**  
**Alternative 1 Oil & Gas**  
**Wells and Pipeline Map**  
**Sheet 5 of 20**  
**Raymondville Drain Project**

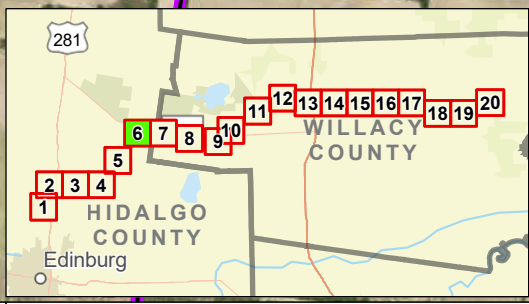
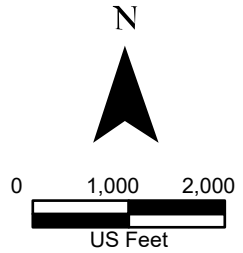
Author : Joel F. Aguirre      Updated : 10/13/2023

DISCLAIMER: RRP Consulting Engineers makes no guarantees as to the accuracy of data used in the construction of this map.

Path: S:\project\4408000\_ProposedRaymondville\GIS\PDF\_Encls-Encl\_Series.aprx



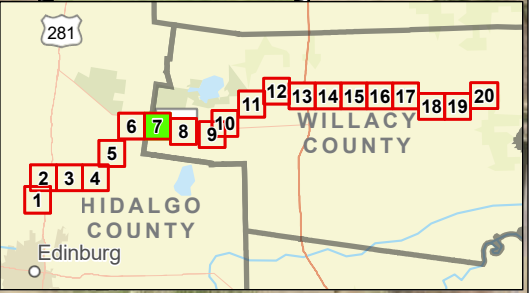
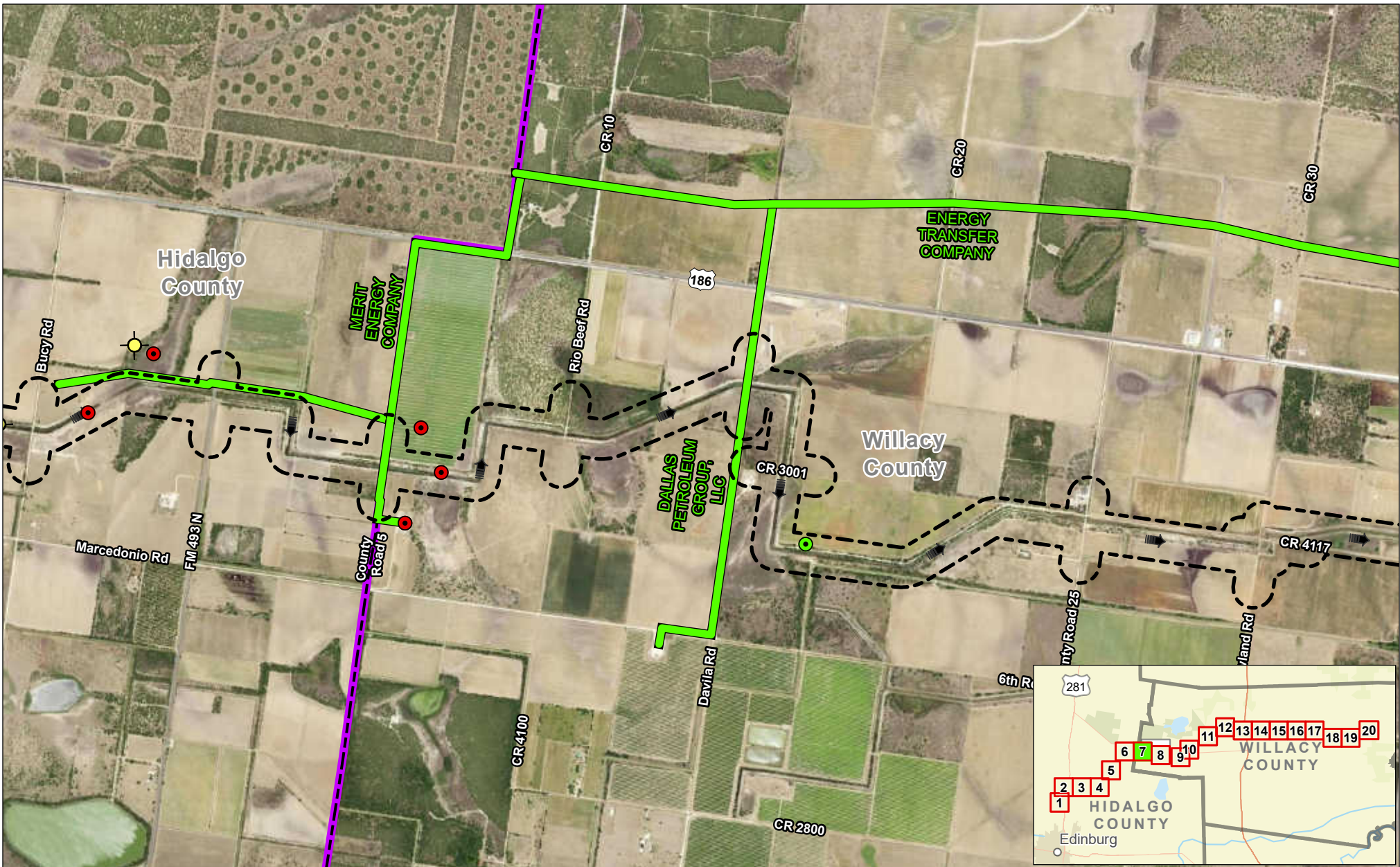
- Legend:**
- Study Corridor
  - Drain Flow
  - County Boundary
  - Natural Gas Pipeline
  - Inactive Oil/Gas Well
  - Dry Hole Well



**Exhibit 16**  
**Alternative 1 Oil & Gas**  
**Wells and Pipeline Map**  
**Sheet 6 of 20**  
**Raymondville Drain Project**

Author : Joel F. Aguirre      Updated : 12/14/2023

DISCLAIMER: RRP Consulting Engineers makes no guarantees as to the accuracy of data used in the construction of this map.



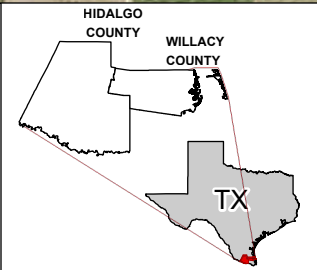
**Legend:**

- Study Corridor
- Drain Flow
- County Boundary
- Natural Gas Pipeline
- Active Oil/Gas Well
- Inactive Oil/Gas Well
- Dry Hole Well

N

0    1,000    2,000

US Feet



## Exhibit 16

# Alternative 1 Oil & Gas Wells and Pipeline Map

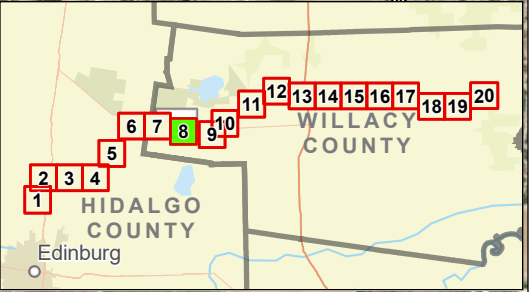
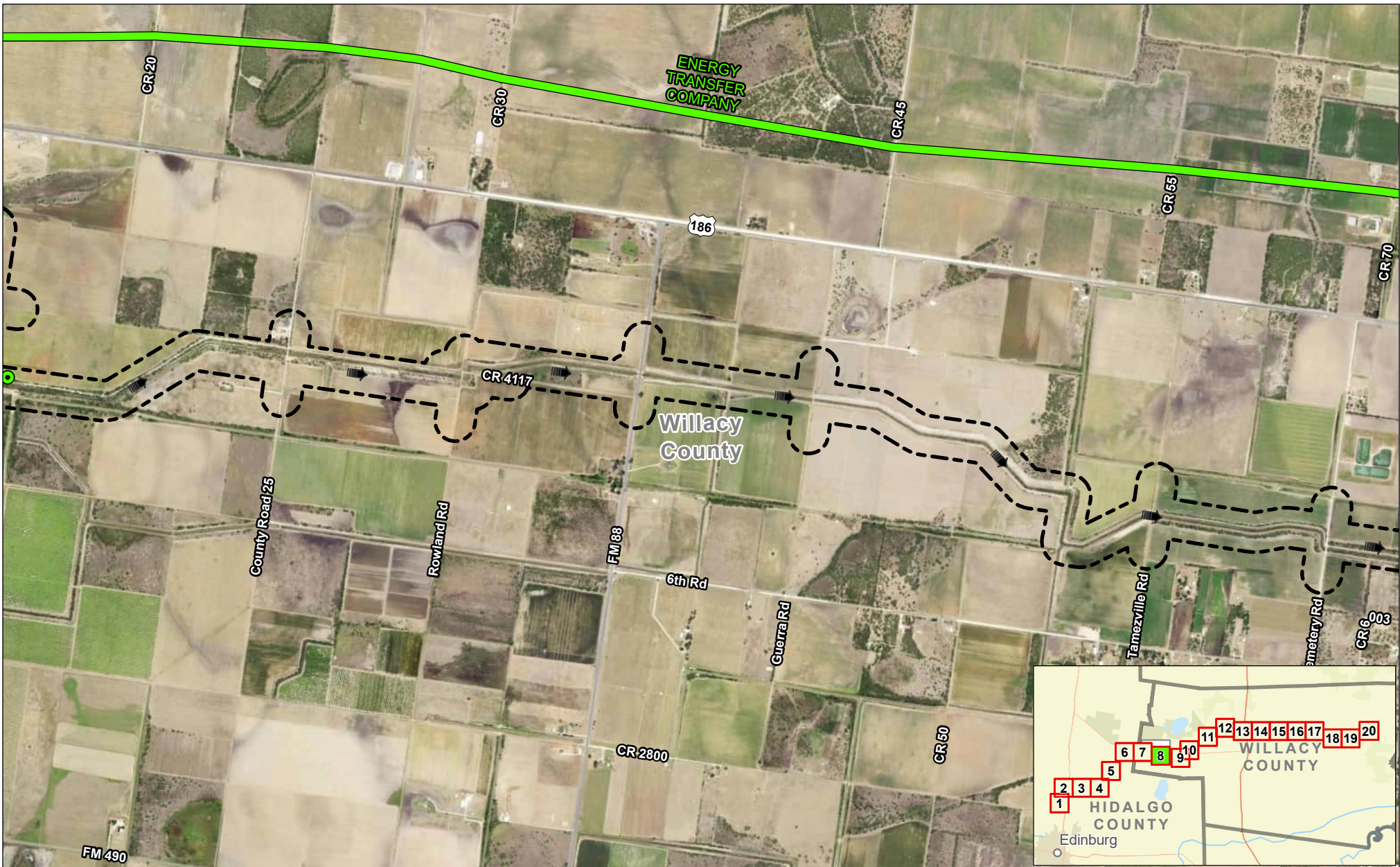
## Sheet 7 of 20

### Raymondville Drain Project

Author : Joel F. Aguirre      Updated : 12/14/2023

DISCLAIMER: RRP Consulting Engineers makes no guarantees as to the accuracy of data used in the construction of this map.

Path: S:\project\4408000\_Proposed\GIS\PDF\_Export\Exh\_Sheet\_7.aprx



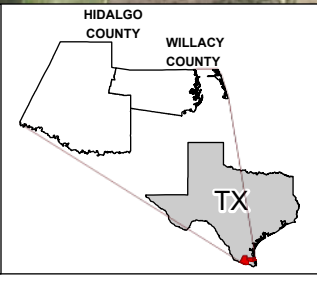
**Legend:**

- Drain Flow
- Study Corridor
- Active Oil/Gas Well

N

0    1,000    2,000

US Feet



## Exhibit 16

# Alternative 1 Oil & Gas Wells and Pipeline Map

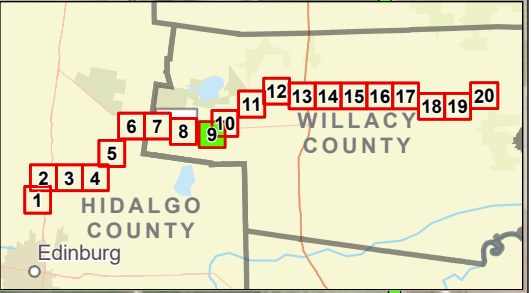
## Sheet 8 of 20

### Raymondville Drain Project

Author : Joel F. Aguirre	Updated : 10/13/2023
--------------------------	----------------------

DISCLAIMER: RRP Consulting Engineers makes no guarantees as to the accuracy of data used in the construction of this map.

Path: S:\project\4408000\_ProposedRaymondvilleDSD\Prop\_Docs\Exh\_Series.aprx



**Legend:**

- Drain Flow
- Study Corridor
- Inactive Oil/Gas Well
- Dry Hole Well

N

0    1,000    2,000

US Feet

HIDALGO COUNTY  
WILLACY COUNTY

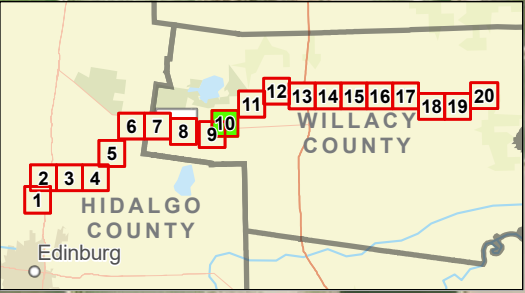
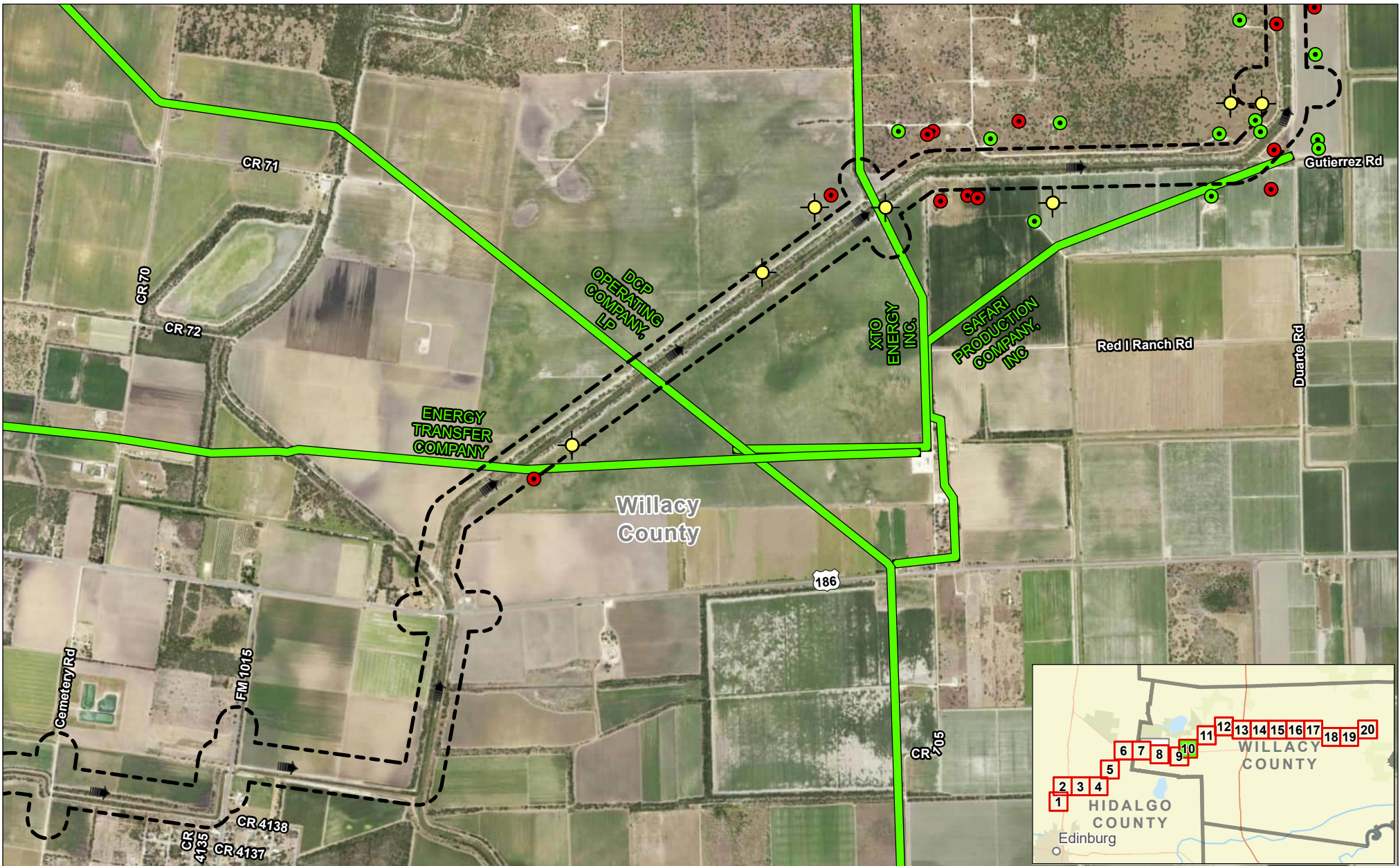
TX

## Exhibit 16 Alternative 1 Oil & Gas Wells and Pipeline Map Sheet 9 of 20 Raymondville Drain Project

Author : Joel F. Aguirre    Updated : 10/13/2023

DISCLAIMER: RRP Consulting Engineers makes no guarantees as to the accuracy of data used in the construction of this map.

Path: S:\projects\448800\_PipelineInventory\GIS\FDP\_Encls-Encl\_Series.aprx



**Legend:**

- Drain Flow
- Study Corridor
- Active Oil/Gas Well
- Inactive Oil/Gas Well
- Dry Hole Well

N

0    1,000    2,000

US Feet

HIDALGO COUNTY    WILLACY COUNTY

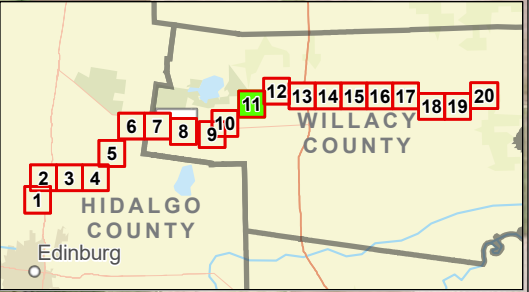
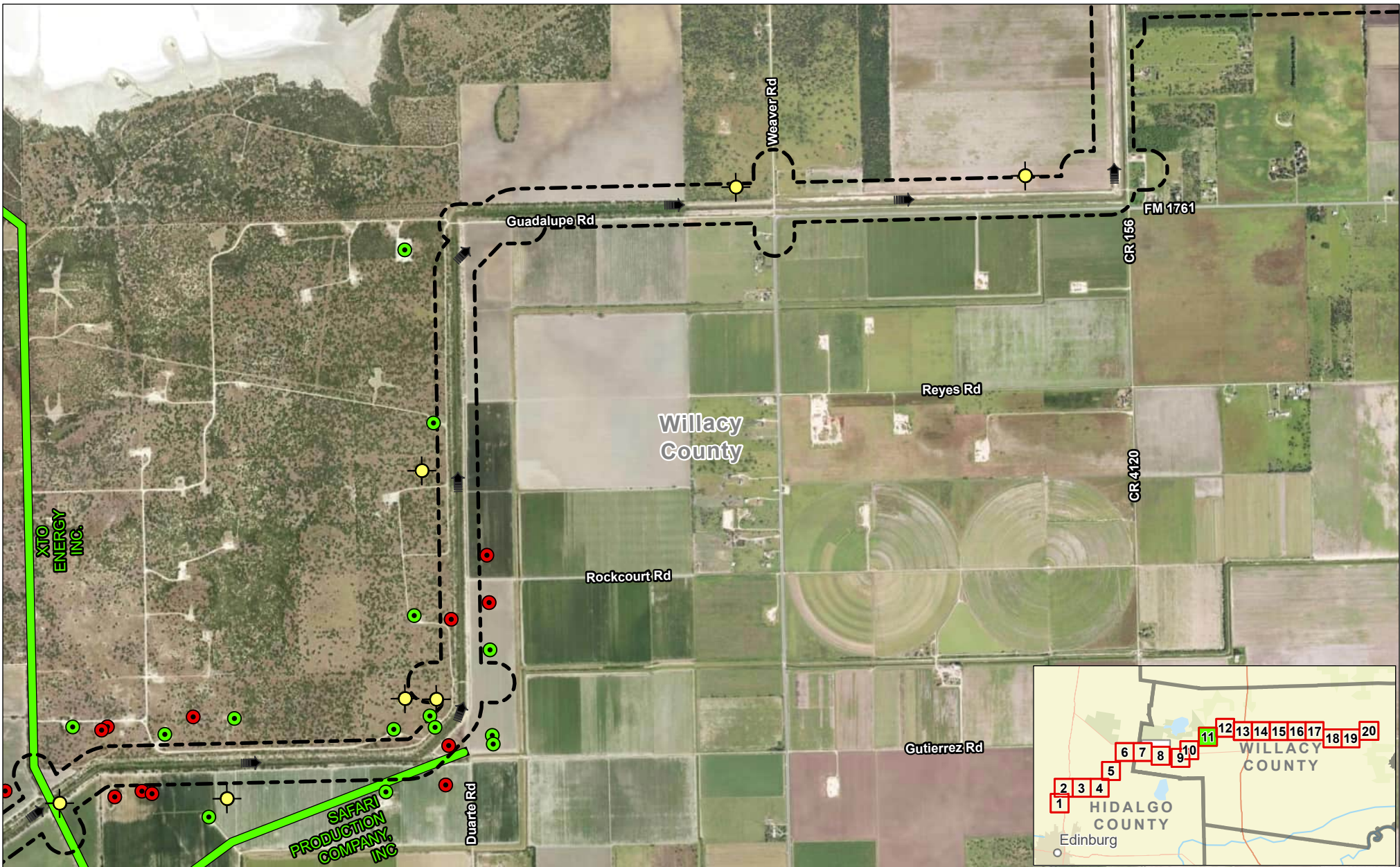
TX

## Exhibit 16 Alternative 1 Oil & Gas Wells and Pipeline Map Sheet 10 of 20 Raymondville Drain Project

Author : Joel F. Aguirre    Updated : 10/13/2023

DISCLAIMER: RRP Consulting Engineers makes no guarantees as to the accuracy of data used in the construction of this map.

Path: S:\project\448800\_P\Project\Raymondville\GIS\Map\_Export\Map\_Series.aprx



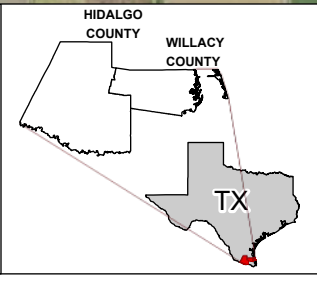
**Legend:**

- Drain Flow
- Study Corridor
- Active Oil/Gas Well
- Inactive Oil/Gas Well
- Dry Hole Well

N

0    1,000    2,000

US Feet

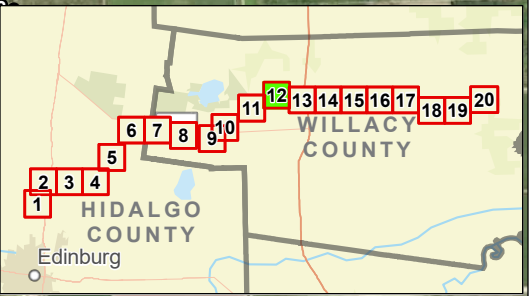
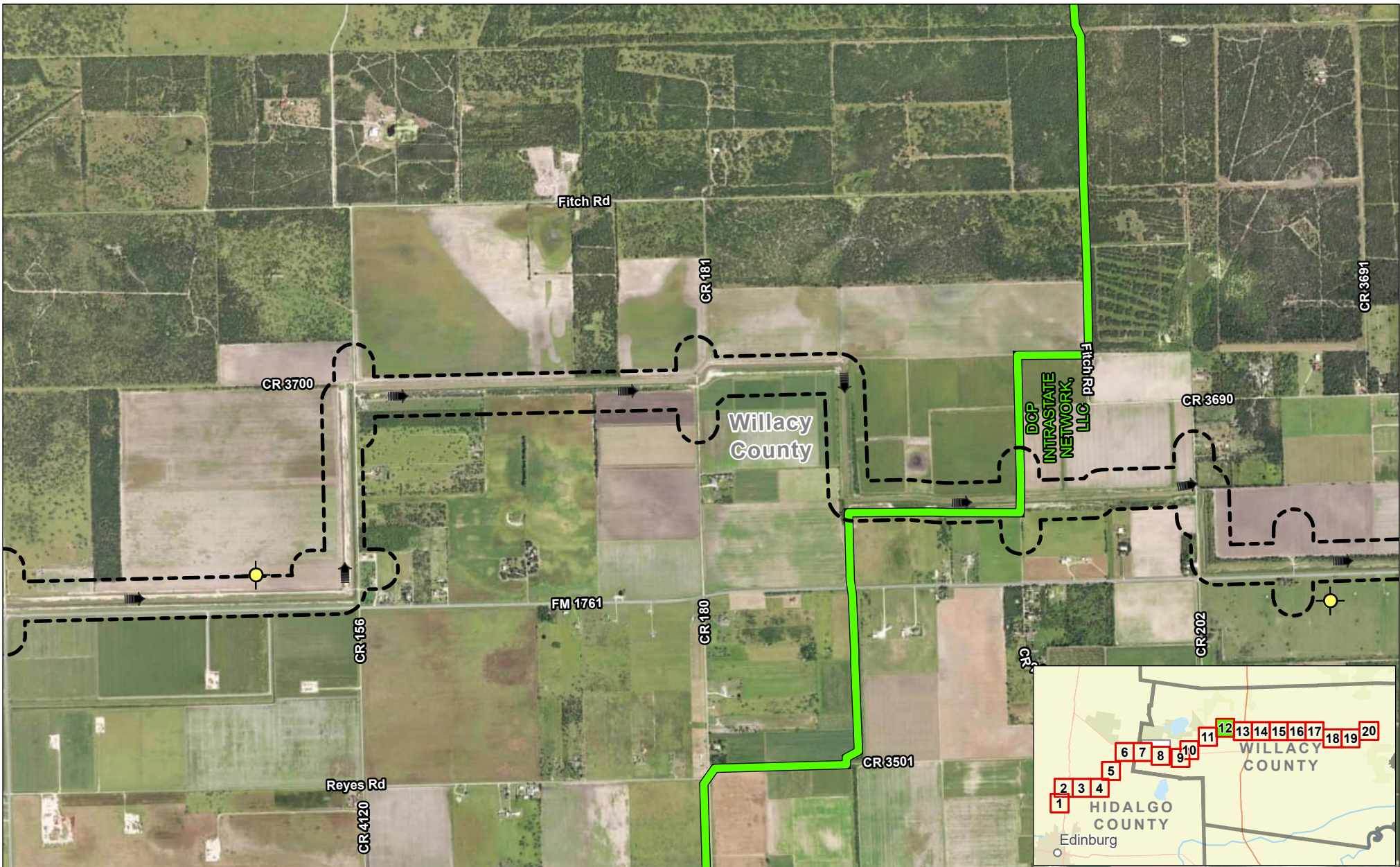


## Exhibit 16 Alternative 1 Oil & Gas Wells and Pipeline Map Sheet 11 of 20 Raymondville Drain Project

Author : Joel F. Aguirre    Updated : 10/13/2023

*DISCLAIMER: RRP Consulting Engineers makes no guarantees as to the accuracy of data used in the construction of this map.*

Path: S:\projects\4408000\_ProposedRaymondvilleDrain\Drawings\Drawings.dwg



**Legend:**

- Drain Flow
- Study Corridor
- Dry Hole Well

N

0    1,000    2,000

US Feet

HIDALGO COUNTY  
WILLACY COUNTY

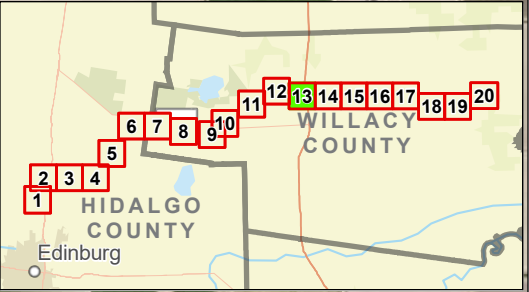
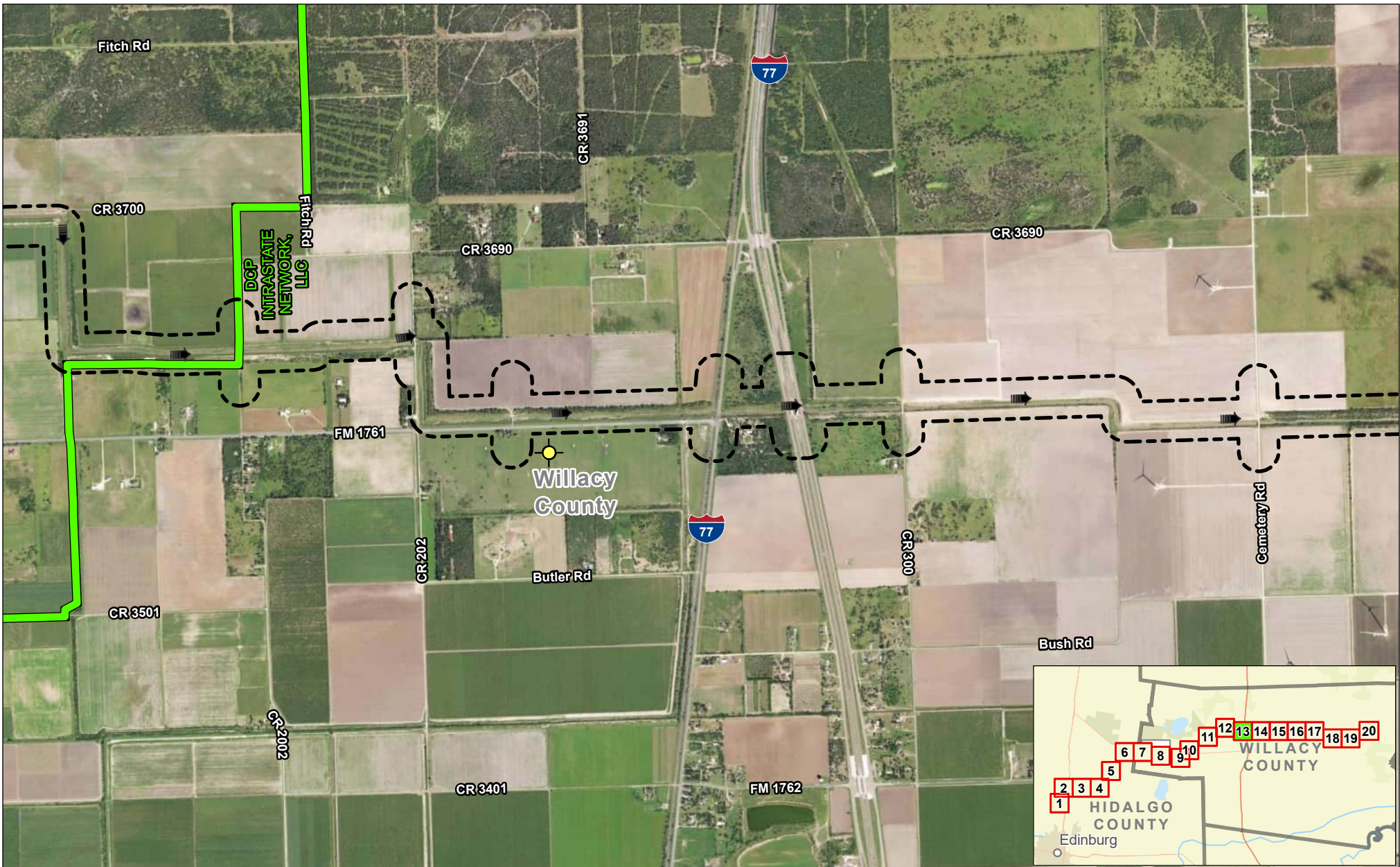
TX

## Exhibit 16 Alternative 1 Oil & Gas Wells and Pipeline Map Sheet 12 of 20 Raymondville Drain Project

Author : Joel F. Aguirre	Updated : 10/13/2023
--------------------------	----------------------

DISCLAIMER: RRP Consulting Engineers makes no guarantees as to the accuracy of data used in the construction of this map.

Path: S:\projects\440800\_ProposedRaymondvilleDGP\_Encls-Encl\_Series.aprx



**Legend:**

Drain Flow  
 Study Corridor  
 Dry Hole Well

N

0 1,000 2,000  
US Feet

HIDALGO COUNTY  
WILLACY COUNTY

TX

**Exhibit 16**  
**Alternative 1 Oil & Gas**  
**Wells and Pipeline Map**  
**Sheet 13 of 20**  
**Raymondville Drain Project**

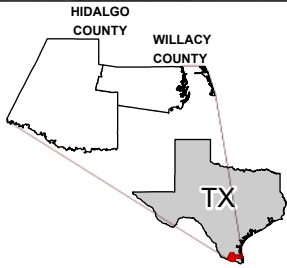
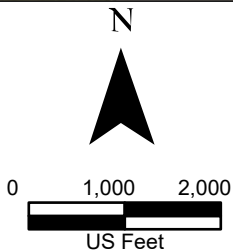
Author : Joel F. Aguirre      Updated : 10/13/2023

DISCLAIMER: RRP Consulting Engineers makes no guarantees as to the accuracy of data used in the construction of this map.

Path: S:\project\440800\_Proposed\GIS\Map\_Export\End\_Series.aprx

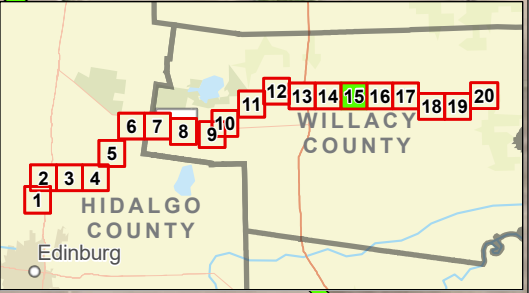
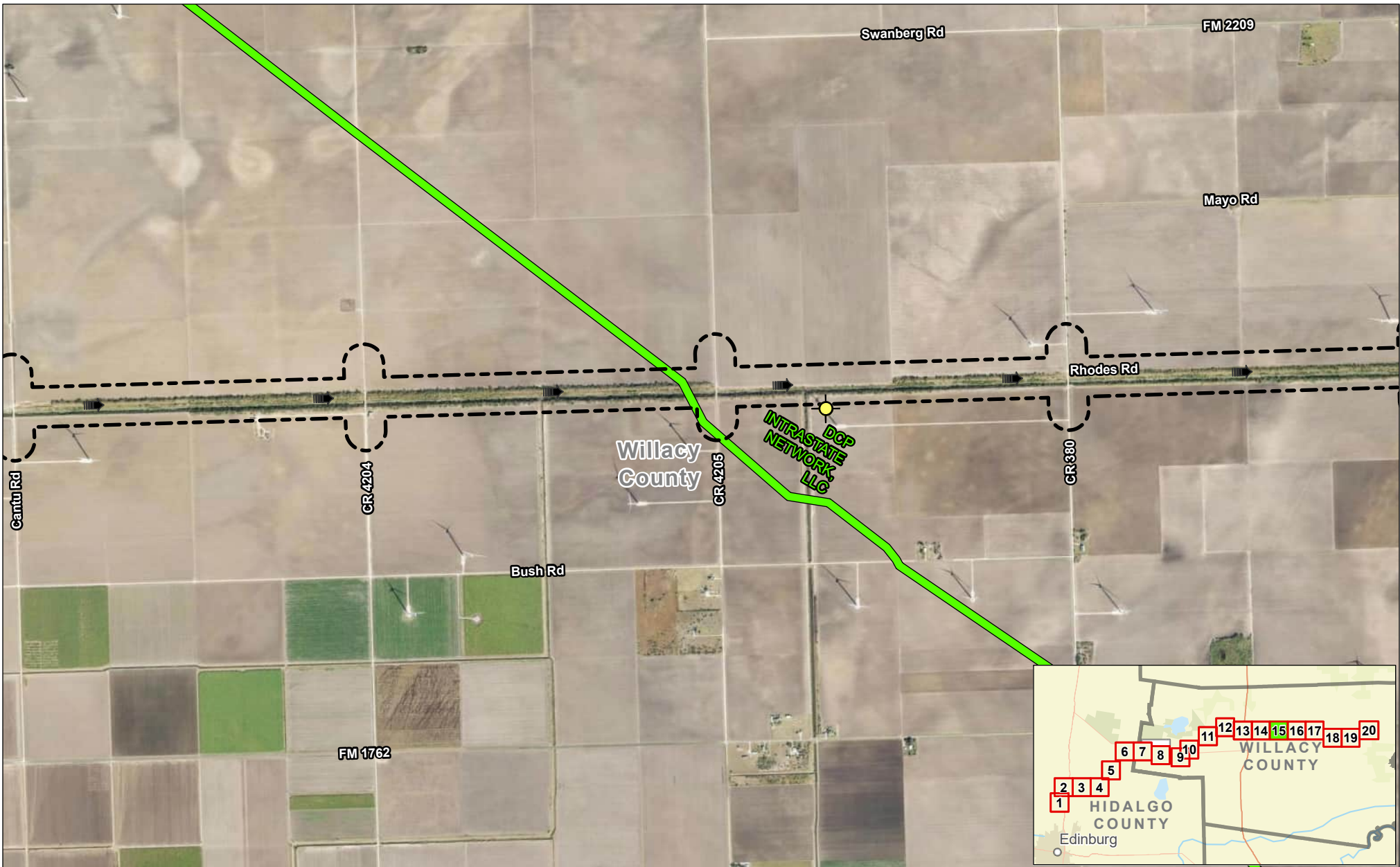


- Legend:**
- Drain Flow
  - Study Corridor



**Exhibit 16**  
**Alternative 1 Oil & Gas**  
**Wells and Pipeline Map**  
**Sheet 14 of 20**  
**Raymondville Drain Project**

Author : Joel F. Aguirre      Updated : 10/13/2023  
 DISCLAIMER: RRP Consulting Engineers makes no guarantees as to the accuracy of data used in the construction of this map.



**Legend:**

Drain Flow  
 Study Corridor  
 Dry Hole Well

N

0    1,000    2,000

US Feet

HIDALGO COUNTY  
WILLACY COUNTY

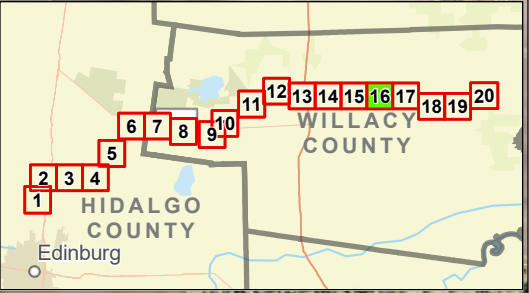
TX

## Exhibit 16 Alternative 1 Oil & Gas Wells and Pipeline Map Sheet 15 of 20 Raymondville Drain Project




Author : Joel F. Aguirre    Updated : 10/13/2023

DISCLAIMER: RRP Consulting Engineers makes no guarantees as to the accuracy of data used in the construction of this map.


Path: S:\project\440800\_Prop\Inventory\GIS\PDF\_Encls-Encl\_Series.aprx



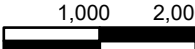
**Legend:**

 Drain Flow  
 Study Corridor  
 Dry Hole Well


N



0    1,000    2,000



US Feet



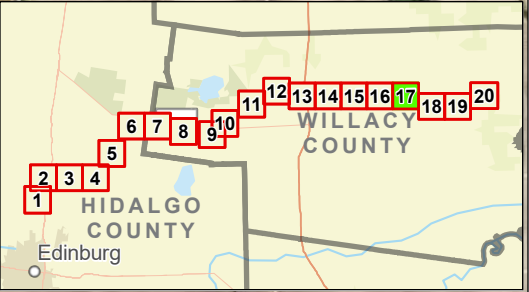


**Exhibit 16**  
**Alternative 1 Oil & Gas**  
**Wells and Pipeline Map**  
**Sheet 16 of 20**  
**Raymondville Drain Project**

Author : Joel F. Aguirre    Updated : 10/13/2023

DISCLAIMER: RRP Consulting Engineers makes no guarantees as to the accuracy of data used in the construction of this map.

Path: S:\project\4108000\_PipelineInventory\GIS\PDF\_Export\Exhibit\_Series.aprx



**Legend:**

Drain Flow  
 Study Corridor  
 Dry Hole Well

N

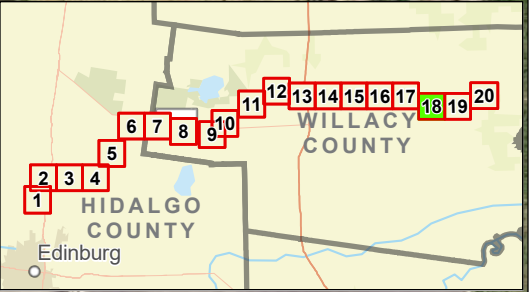
0 1,000 2,000  
US Feet



**Exhibit 16**  
**Alternative 1 Oil & Gas**  
**Wells and Pipeline Map**  
**Sheet 17 of 20**  
**Raymondville Drain Project**

Author : Joel F. Aguirre      Updated : 10/13/2023  
DISCLAIMER: RRP Consulting Engineers makes no guarantees as to the accuracy of data used in the construction of this map.

Path: S:\project\4108000\_ProposedRaymondvilleDrain\Drawings\Draw\_Series.aprx



**Legend:**

- Drain Flow
- Study Corridor

N

0    1,000    2,000

US Feet



## Exhibit 16

# Alternative 1 Oil & Gas Wells and Pipeline Map

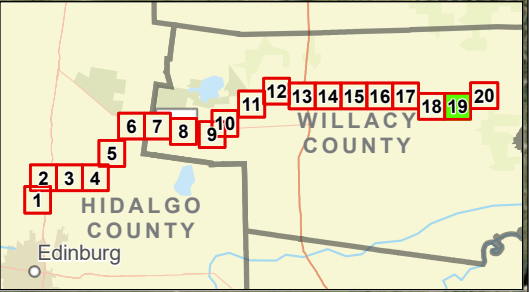
## Sheet 18 of 20

### Raymondville Drain Project




Author : Joel F. Aguirre	Updated : 10/13/2023
--------------------------	----------------------

DISCLAIMER: RRP Consulting Engineers makes no guarantees as to the accuracy of data used in the construction of this map.


Path: S:\project\4108000\_ProjectInventory\GIS\PDF\_Export\End\_Series.aprx




**Legend:**

 Drain Flow  
 Study Corridor  
 Dry Hole Well

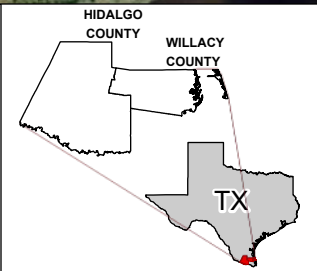


N



0    1,000    2,000



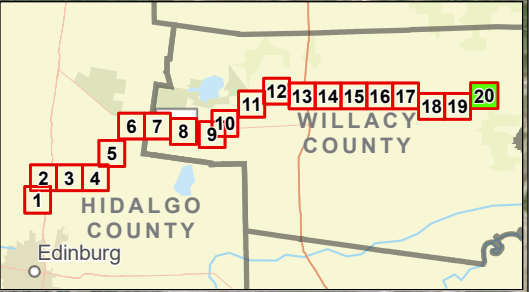
US Feet




## Exhibit 16 Alternative 1 Oil & Gas Wells and Pipeline Map Sheet 19 of 20 Raymondville Drain Project

Author : Joel F. Aguirre      Updated : 10/13/2023  
 DISCLAIMER: RRP Consulting Engineers makes no guarantees as to the accuracy of data used in the construction of this map.


Path: S:\project\410800\_Proposed\GIS\PCP\_EndUse-Eng\_Series.aprx



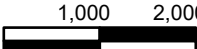
**Legend:**

 Drain Flow  
 Study Corridor  
 Dry Hole Well

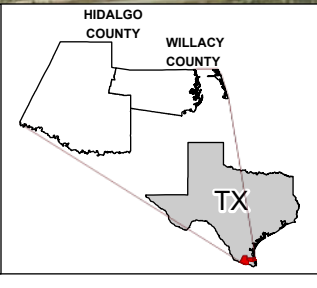
N



0      1,000      2,000



US Feet





**Exhibit 16**  
**Alternative 1 Oil & Gas**  
**Wells and Pipeline Map**  
**Sheet 20 of 20**  
**Raymondville Drain Project**

Author : Joel F. Aguirre      Updated : 10/13/2023  
DISCLAIMER: RRP Consulting Engineers makes no guarantees as to the accuracy of data used in the construction of this map.

Path: S:\project\4408000\_ProjectInventory\GIS\PDF\_Books\End\_Series.aprx